

## 1.2. Types and Features of the Linear Bush

### ●Standard Type

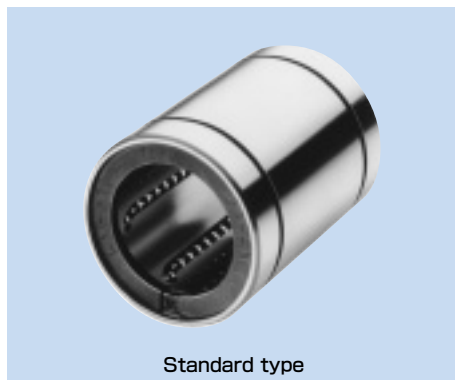
With the Linear Bush nut having the most accurate cylindrical shape, this type is widely used.

There are two series of the Linear Bush in dimensional group.

Type LM .....Millimeter-dimension series  
used most widely in Japan

Type LM-MG .....Stainless steel version of  
type LM

Type ME .....Millimeter-dimension series  
commonly used in Europe



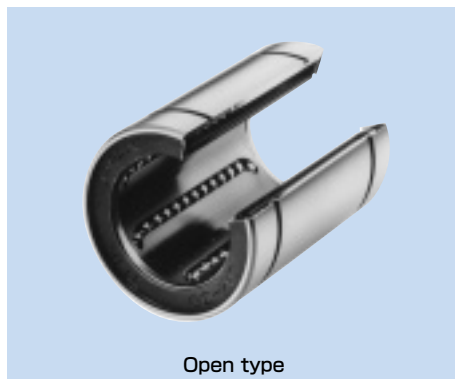
Standard type

### ●Open Type

The nut is partially cut open by one row of balls (50° to 80°). This enables the Linear Bush to be used even in locations where the LM shaft is supported by a column or fulcrum. In addition, a clearance can easily be adjusted.

Models LM-OP/LME-OP

Model LM-MG-OP



Open type

### ●Seal Type

This type has the same dimensions as the standard type, but a special synthetic rubber seal is incorporated into both ends or either end of the linear bush, thus to prevent foreign matter from entering the linear bush and minimize leaking of the grease.

Models LM····UU/LME····UU/LM····MGUU

(The symbol for type with its one side having a seal: "U")

A seal is also available for some of the clearance-adjustable types and the open types.



Seal type

## ●Clearance-adjustable Type

This type has the same dimensions as the standard type, but the nut has a slit in the direction of the LM shaft. This allows the linear bush to be installed in a housing whose inner diameter is adjustable, and enables the clearance between the LM shaft and the housing to easily be adjusted.

Models LM-AJ/LME-AJ

Model LM-MG-AJ

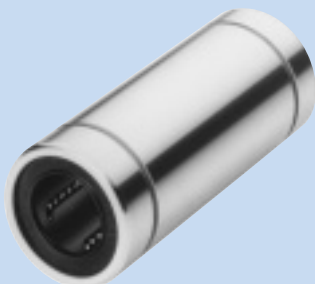


Clearance-adjustable Type

## ●Long Type

Containing two units of the standard retainer plate, this type is optimal for locations where a moment load is present and reduces man-hours in installation.

Model LM-L ..... standard type



Long type model LM-L

## ●Flanged Type (Circular)

The nut of the standard type Linear Bush is integrated with a flange. This enables the Linear Bush to be directly mounted onto the housing with bolts, thus achieving easy installation.

Model LMF .....standard type

Model LMF-M .....made of stainless steel



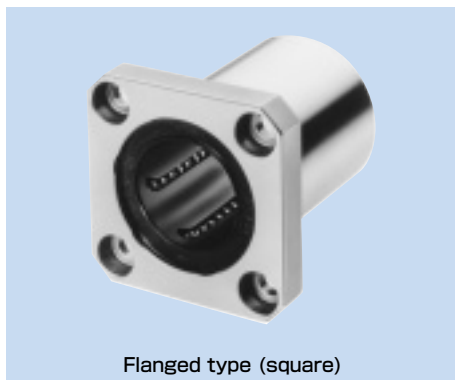
Flanged type (circular)

### ● Flanged Type (Square)

Like model LMF, this type also has a flange, but the flange is cut to a square shape. Since the height is lower than the circular flange type, compact design is allowed.

Model LMK .....standard type

Model LMK-M .....made of stainless steel



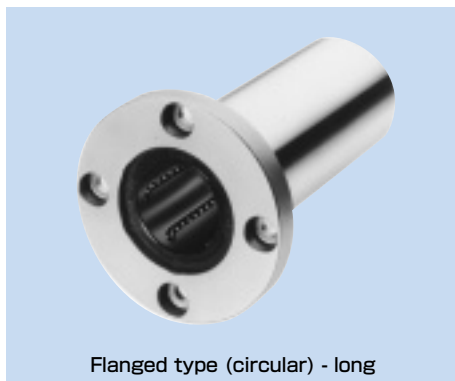
Flanged type (square)

### ● Flanged Type (Circular) - Long

The nut of the long type Linear Bush is integrated with a flange. This enables the Linear Bush to be directly mounted onto the housing with bolts, thus achieving easy installation. Containing two units of the standard retainer plate, this type is optimal for locations where a moment load is present.

Model LMF-L .....standard type

Model LMF-ML .....made of stainless steel



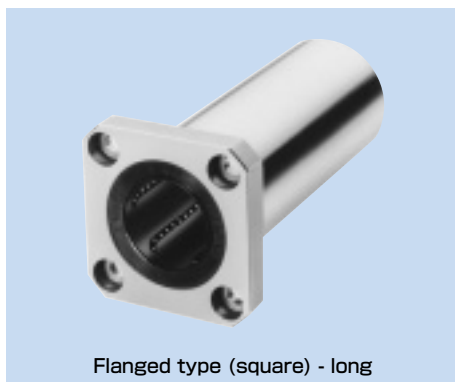
Flanged type (circular) - long

### ● Flanged Type (Square) - Long

Like model LMF-L, this type also has a flange, but the flange is cut to a square shape. Since the height is lower than the circular flange type, compact design is allowed.

Model LMK-L .....standard type

Model LMK-ML .....made of stainless steel



Flanged type (square) - long

### ● Flanged Type (Small)

The nut is integrated with a small flange. Since the height is lower than model LMK, compact design is allowed. Since the rows of balls in the Linear Bush are arranged so that two rows receive the load from the flat side, a long service life can be achieved.

Model LMH .....standard type

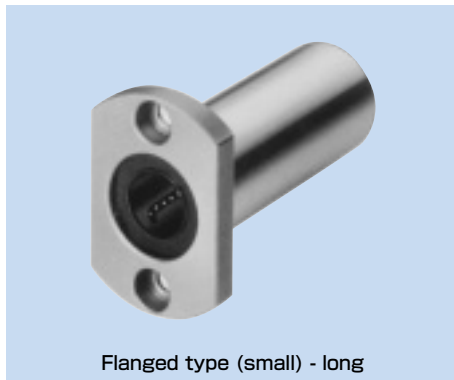


Flanged type (small)

### ● Flanged Type (Small) - Long

The flange is smaller and lower than model LMK-L, allowing compact design. Containing two units of the standard retainer plate, this type is optimal for locations where a moment load is present. Since the rows of balls in the Linear Bush are arranged so that two rows receive the load from the flat side, a long service life can be achieved.

Model LMH-L .....standard type



Flanged type (small) - long

### ● LM Case Unit Type Model SC

It is a case unit where the standard type of Linear Bush is incorporated into a small, light-weight aluminum casing. This model can easily be mounted simply by securing it to the table with bolts.



LM case unit type model SC

### ●LM Case Unit Type (Long) Model SL

A long version of model SC, this model contains two units of the standard type Linear Bush in an aluminum casing.



LM case unit type (long) model SL

### ●LM Case Unit Type Model SH

It is a case unit where the standard type of Linear Bush is incorporated into a smaller and lighter aluminum casing than model SC. This model allows even more compact design than model SC. It also has flexibility in mounting orientation. Additionally, it is structured so that two rows of balls receive the load from the top of the casing, allowing a long service life to be achieved.

Flexibly mountable type



LM case unit type model SH

### ●LM Case Unit Type (Long) Model SH-L

A long version of model SH, this model is a case unit that contains two units of the standard type Linear Bush in an aluminum casing.

Flexibly mountable type



LM case unit type (long) model SH-L