

2.3. Installation

Mounting Screws of the Slide Rail

The slide rail is to be mounted using M4 screws. Since the mounting space is small as shown in Fig. 2, we recommend using truss head screws or binder screws.

Note: For model FBL 35E, use M3 truss head screws or binder screws.

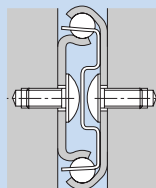


Fig. 2

Attaching the Slide Rail

While keeping the maximum stroke, mount the outer rail at the section where the inner rail and the outer rail overlap, slide the inner rail backward, and then secure the rail using a screw through the access hole.

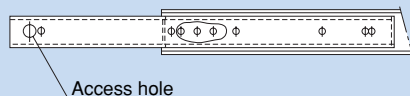


Fig. 3

Mounting Orientation

For use other than with the mounting orientation shown in Fig. 4, contact **THK**.

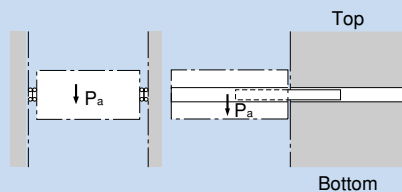


Fig. 4